



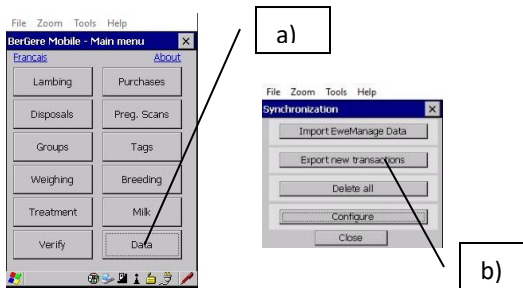
Transfer the PSION transactions to EweManage



Step 1 (at the PSION)

Create the transaction files on the PSION

- Click « Data » Main menu
- « Export new transactions »



- Select the transactions to be Exported and click « OK »



Step 2 (at the PC)

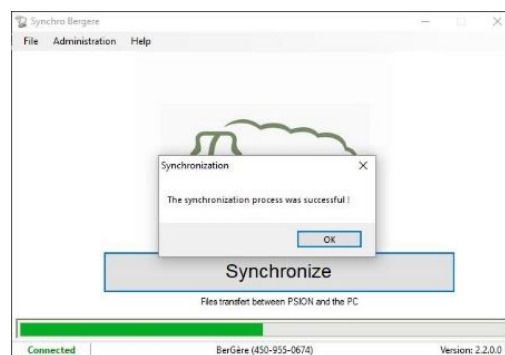
Transfer those files to the PC by means of SynchroBergère

- Launch SynchroBergère
- Connect the base to the PC
- Insert the open PSION in the base

Wait until you get the « connected » indication



- Click « synchronize » to transfer files



Step 3 (at the PC)

Read and confirm the transactions in EweManage on the PC

- Access the readers/Scales button « then select Workabout »



- Select the transaction (button should be green) to import (ex purchases)



Purchases made via EweManage mobile

Number of animals: 7

Indicate in what group or pen you will put these animals

Indicate an average date of birth (maybe changed afterwards)

Select the site number where you place the animals

Select your FADQ producer number

Breed type	Tag number	Pen ID of origin	Animal in flock	Tag status	Year	Date of birth	FADQ number
CD	315342972	18	2017-09-18	F	2017	2017-09-18	838258
CD	315342983	18	2017-09-18	F	2017	2017-09-18	838258
CD	315342994	18	2017-09-18	F	2017	2017-09-18	838258
CD	315342985	18	2017-09-18	F	2017	2017-09-18	838258
CD	315342996	18	2017-09-18	F	2017	2017-09-18	838258
CD	315342987	18	2017-09-18	F	2017	2017-09-18	838258
CD	315342988	18	2017-09-18	F	2017	2017-09-18	838258

- Confirm the new transactions into EweManage

Purchases made via EweManage mobile

Number of animals: 7

Indicate in what group or pen you will put these animals

Indicate an average date of birth (maybe changed afterwards)

Select the site number where you place the animals

Select your FADQ producer number

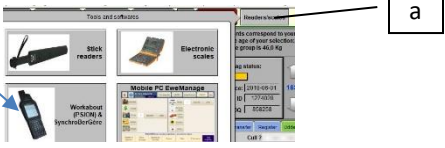
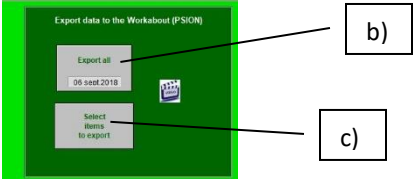
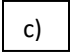

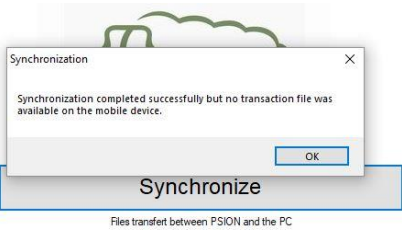

Breed type	Tag number	Pen ID of origin	Animal in flock	Tag status	Year	Date of birth	FADQ number
CD	315342972	18	2017-09-18	F	2017	2017-09-18	838258
CD	315342983	18	2017-09-18	F	2017	2017-09-18	838258
CD	315342994	18	2017-09-18	F	2017	2017-09-18	838258
CD	315342985	18	2017-09-18	F	2017	2017-09-18	838258
CD	315342996	18	2017-09-18	F	2017	2017-09-18	838258
CD	315342987	18	2017-09-18	F	2017	2017-09-18	838258
CD	315342988	18	2017-09-18	F	2017	2017-09-18	838258



Transfer EweManage data to the PSION



Make sure that you have no new non-exported transactions on the PSION prior to importing the data

Step 1 (at the PC) Create the files containing EweManage information	Step 2 (at the PC) Transfer those files using SynchroBergère	Step 3 (at the PSION) Import (read) the EweManage data into the PSION
<p>a) Access the reader/scale button And select « Workabout »</p>  <p>b) In the dark green export section click « Export all » to create files</p>  <p>c) Alternatively, you may select only The items to export</p> 	<p>a) Launch Synchrobergere b) Connect the base to the PC c) Insert the open PSION in the base</p> <p>Wait until you get the « connected » indication</p>  <p>d) Click « synchronize » to transfer files</p> 	<p>a) Click on the “data” button</p>  <p>b) Click on “Import EweManage data”</p> 