

# Androvin: EweManage Mobile on Android

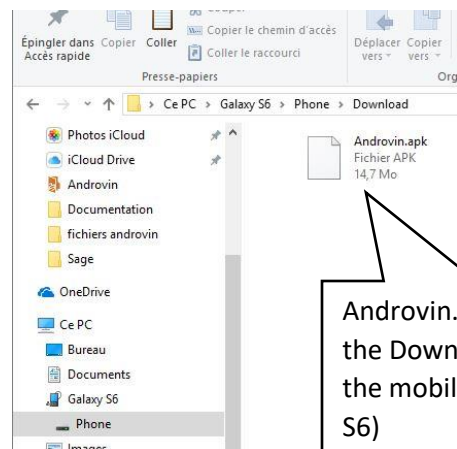
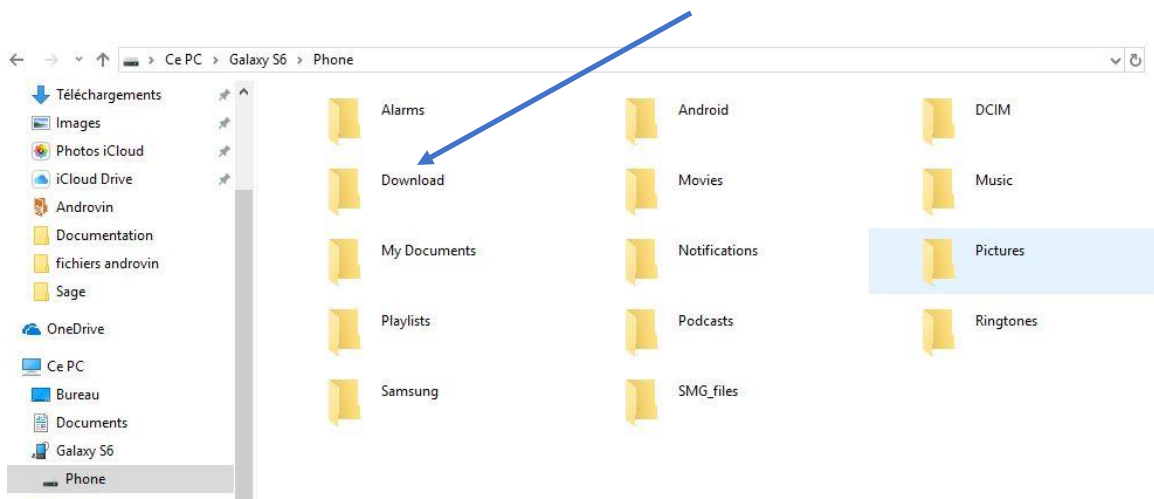
## installation Instructions

### Pre-requisite:

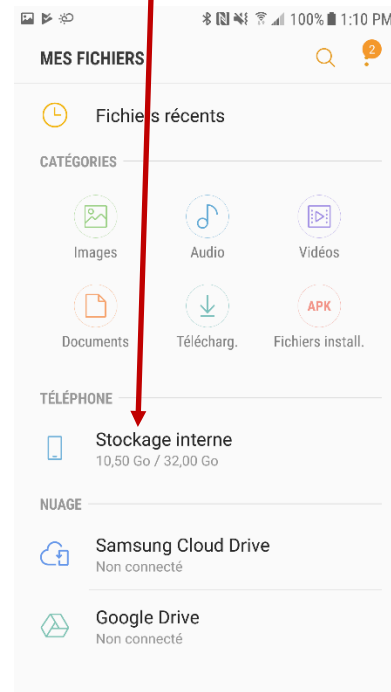
- Telephone or tablet Android version 4 or higher
- Subscription validates with EweManage
- RFID reader (optional but useful!)
- You must buy a Androvin activation license: one timeexpenses, unlimited number of devices

### Installation of the software on your Android mobile

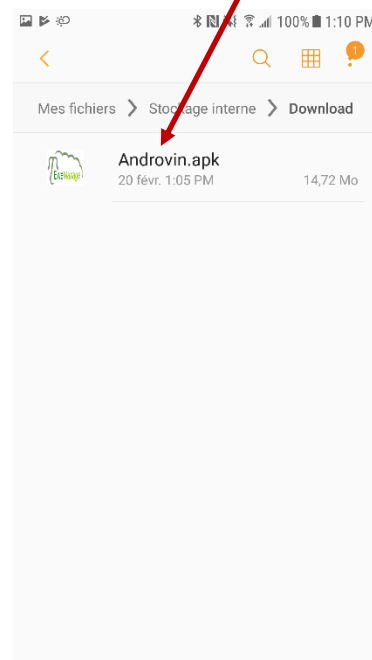
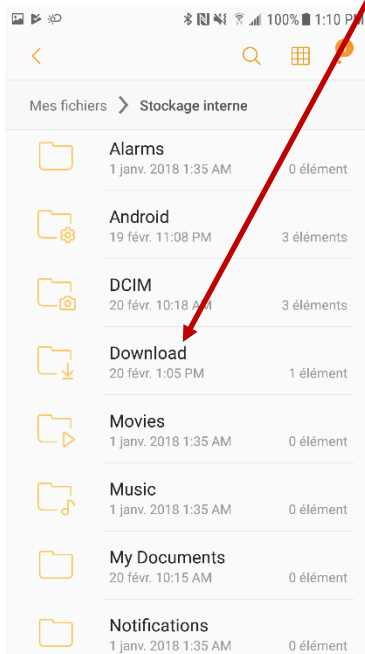
- 1) Download the application starting from the ewemanage.com website, section "Downloads". You will obtain a file named Androvin.apk
- 2) Connect your mobile on the PC using a USB cable and copy the file in the "Download" directory of your mobile:



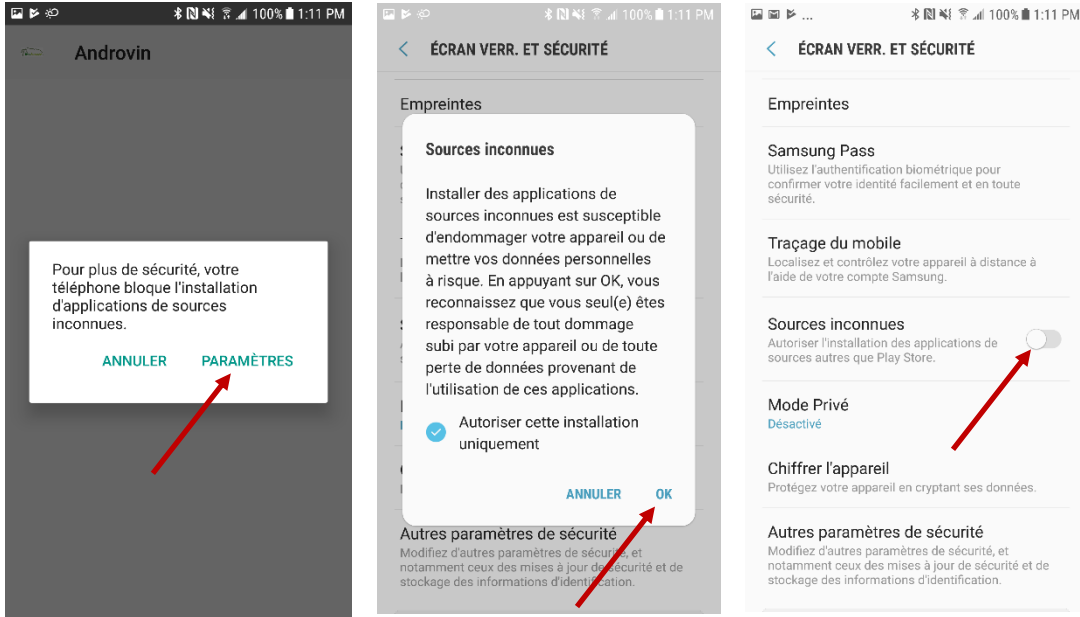
3) At your mobile, reach the "Files" then with the "internal storage":



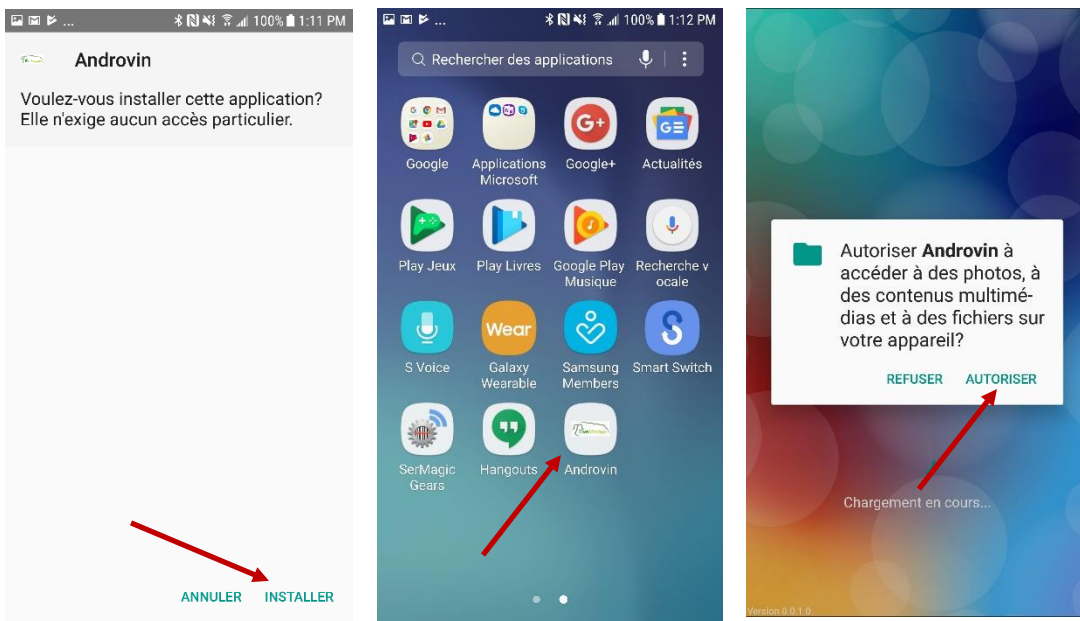
4) Select the "Download" directory, you will see there the Androvin.apk file which you have just copied:



- 5) Double-click on the file to install it. Select "parameters" in the screen which follows because Android tries to block the installation of the unknown applications and authorize it. Click to allow the installation of unknown sources



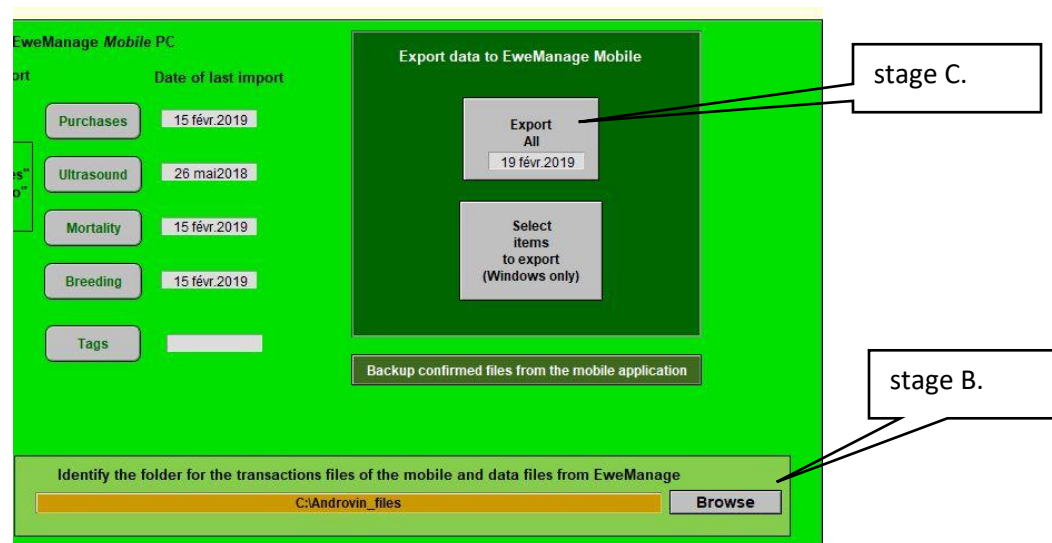
- 6) Select "Install" and select the applications folder, you will see the logo of the application there: click to open it and authorize the access to the files to allow the system to create the "Androvin" directory which will contain your data.



- 7) Close the application. The next step will be to copy the data from your EweManage in the mobile application folder. This stage is important because the data which you will import in your mobile contains not only information on your flock and lambs, but also your EweManage subscription license, essential to Androvin. It is thus necessary, initially, to create the files which will contain the EweManage data to be exported to the mobile. Proceed as follows:
- At your PC, launch EweManage and click the "Readers/scales" button, then "MobilePC"

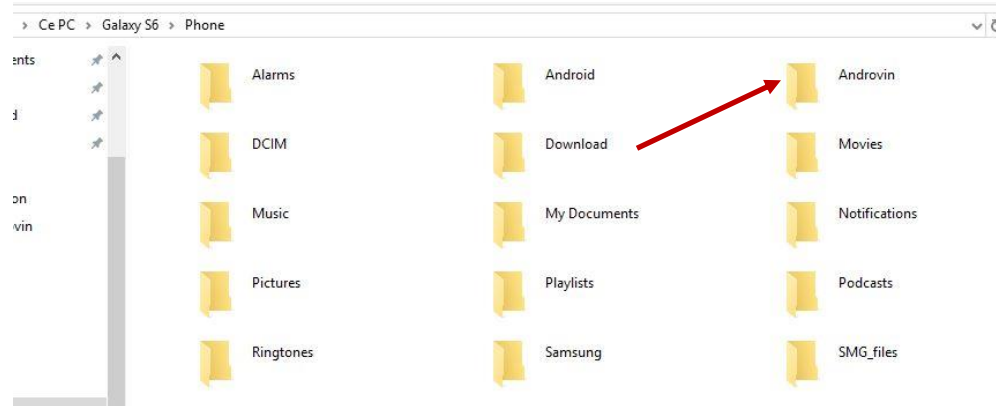


- If it is your first use, define the folder in which you will create the files to be exported to the mobile while clicking on the button "Browse" at the bottom right corner of the screen. Here in the example, I chose the directory "C:\Androvin\_files"
- Click on "Export All" and select the "Android" file format.



- Now, it is necessary to copy the files lately created into the "Androvin" folder of your mobile. Note: it may be that if you left your mobile connected with the PC, you may not see the directory in question. Then, disconnect the mobile from the PC and reconnect to it in order to "reset" the folders view.

e. In the Windows explorer, select your mobile and open the "Androvin" folder

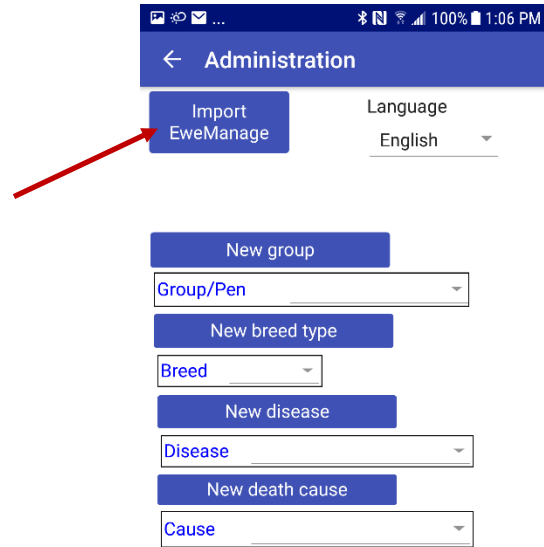
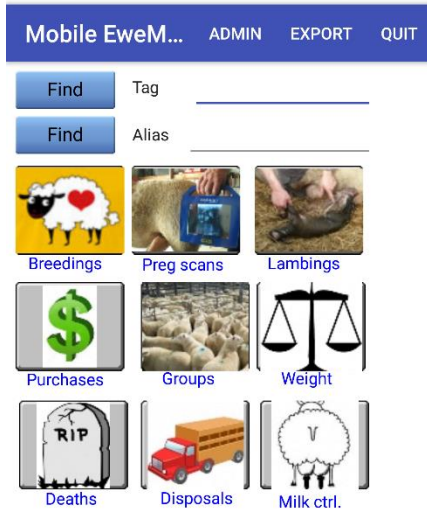


f. Copy in your Androvin folder of the mobile, the 7 files which you have just created and who are in the directory of the PC that you defined at the stage B. above:

The screenshot shows a Windows Explorer window with the address bar set to 'Ce PC > T180145000C (C:) > Androvin\_files'. The main area displays a table of files with columns for 'Nom', 'Modifié le', 'Type', and 'Taille'. The files listed are:

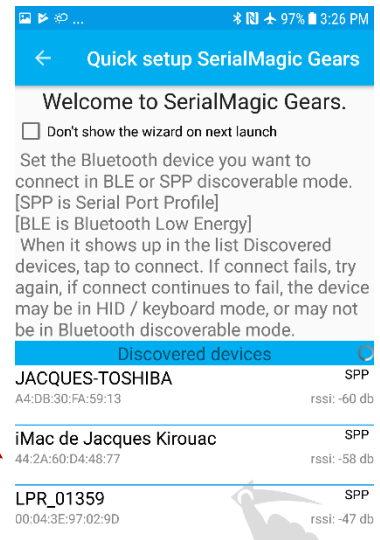
Nom	Modifié le	Type	Taille
data.csv	2019-02-23 12:00	Fichier CSV	1 574 Ko
list_breeds.csv	2019-02-23 12:00	Fichier CSV	1 Ko
list_Dcauses.csv	2019-02-23 12:00	Fichier CSV	1 Ko
list_diseases.csv	2019-02-23 12:00	Fichier CSV	1 Ko
list_group.csv	2019-02-23 12:00	Fichier CSV	1 Ko
list_medic.csv	2019-02-23 12:00	Fichier CSV	2 Ko
list_premID.csv	2019-02-23 12:00	Fichier CSV	1 Ko

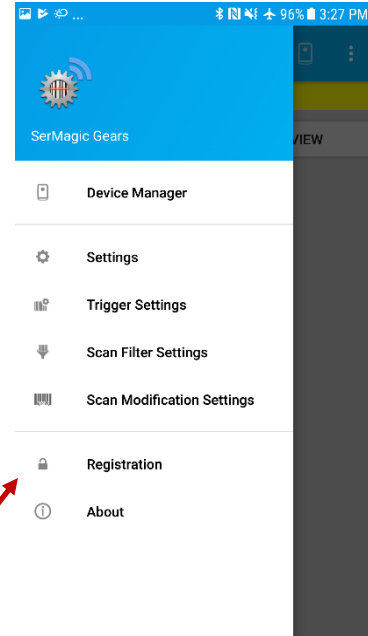
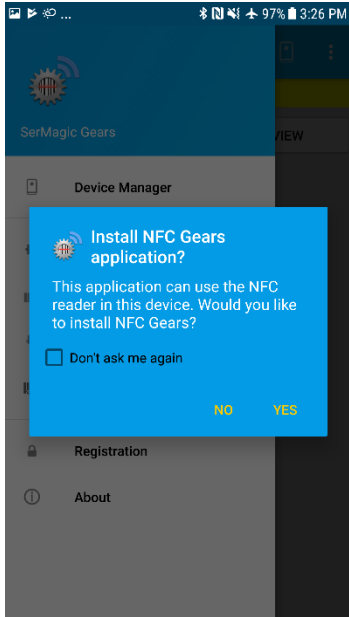
8) Next, import the data in the Androvin application on your mobile: Launch Androvin on your mobile and select "Admin". On the administration screen, click on "Import EweManage". You are now ready to use the application.



### Connectivity of the RFID reader to work with the Androvin application:

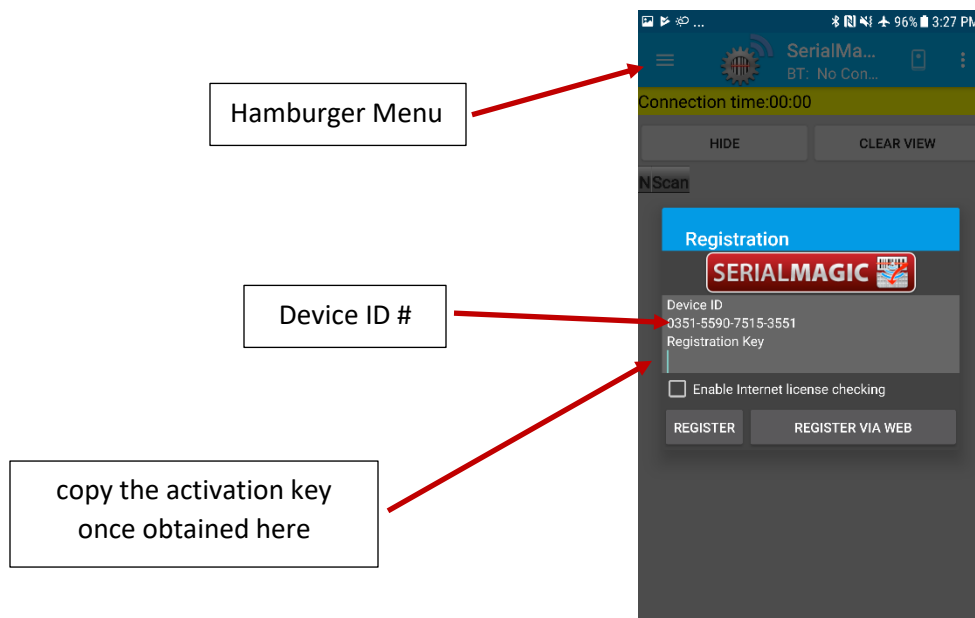
- 1) On your mobile, access the "Google store" and install the application "Serial Magic GEARS". You will have to buy the license for use of a non-proprietary reader on your mobile.
- 2) Connect your bluetooth RFID reader on your Android mobile
- 3) Launch "Serial Magic GEARS" to discover your reader (here the example is the LPR)
- 4) Authorise the installation of the NFC





- 5) Click on the " hamburger Menu " button in the top left corner of the screen and select "Registration"
- 6) Take note of the "Device ID" number and place the order to receive your activation key (Registration Key) at the following address:

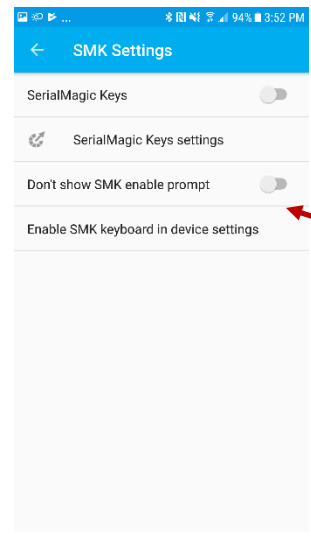
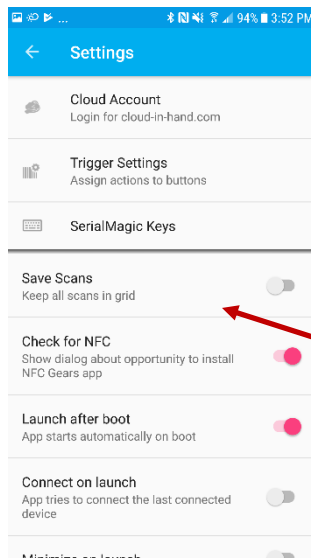
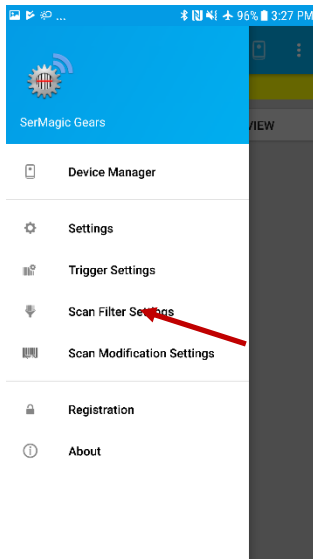
<https://buy.serialio.com/collections/software/products/serialmagic-license>



- 7) You will receive an activation key which you will copy under the line "Registration key".  
For more information, you can consult the following link:

<https://www.serialio.com/support/serialmagic-gears/android/how-activate-serialmagic-gears-android>

- 8) Then, once the system is active, go to the main menu of Serial Magic Keys to select "Settings", then "Serial Magic Keys" and finally "Serial Magic Keys Settings"



- 9) In item "Post after special ", select "Enter". You are ready to use the reader. In the screens of the Androvin application, ensure that the selected keyboard is that of Serial Magic and not the conventional keyboard of your device. The tags reading will be made directly in the fields where the cursor is located.

