

Mobile PC Installation steps on iPhone

(Applies for any device IOS: Ipad and Ipod touch)

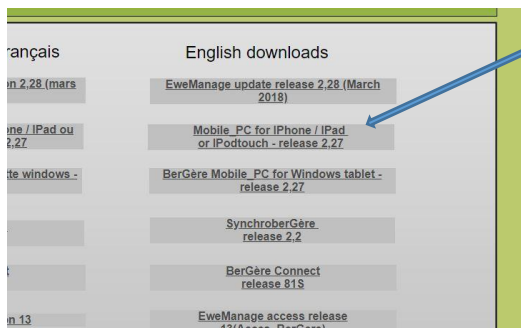
1. **Filemaker Go** : On your mobile device, reach the "AppStore" and install the free application Filemaker Go 16:



2. **iCloud** : You must activate your iCloud account that will be used to transfer the data between your PC and your mobile device. Therefore, at your PC, install iCloud for Windows (Search the WEB for « iCloud for Windows » and follow the installation instructions)
3. **EweManage Mobile PC** : You must download the application on www.ewemanage.com Access the site and click the button "Downloads" and download the current version of EweManage Mobile PC. If possible, download on your desktop. Otherwise, your copy will be located in your downloads directory)

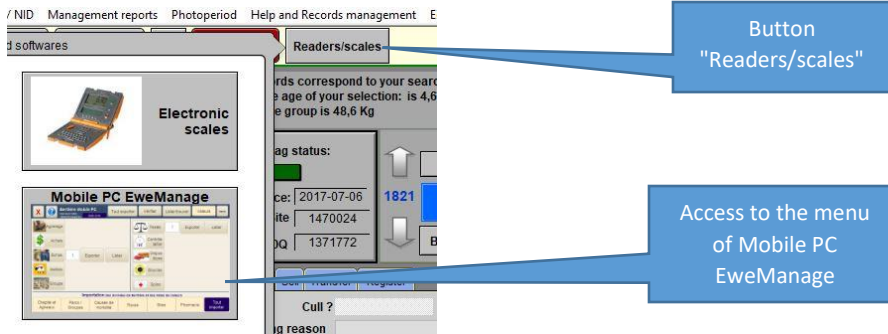
The direct download adress is :

http://ewemanage.com/Downloads/mobile_PC.fmpur

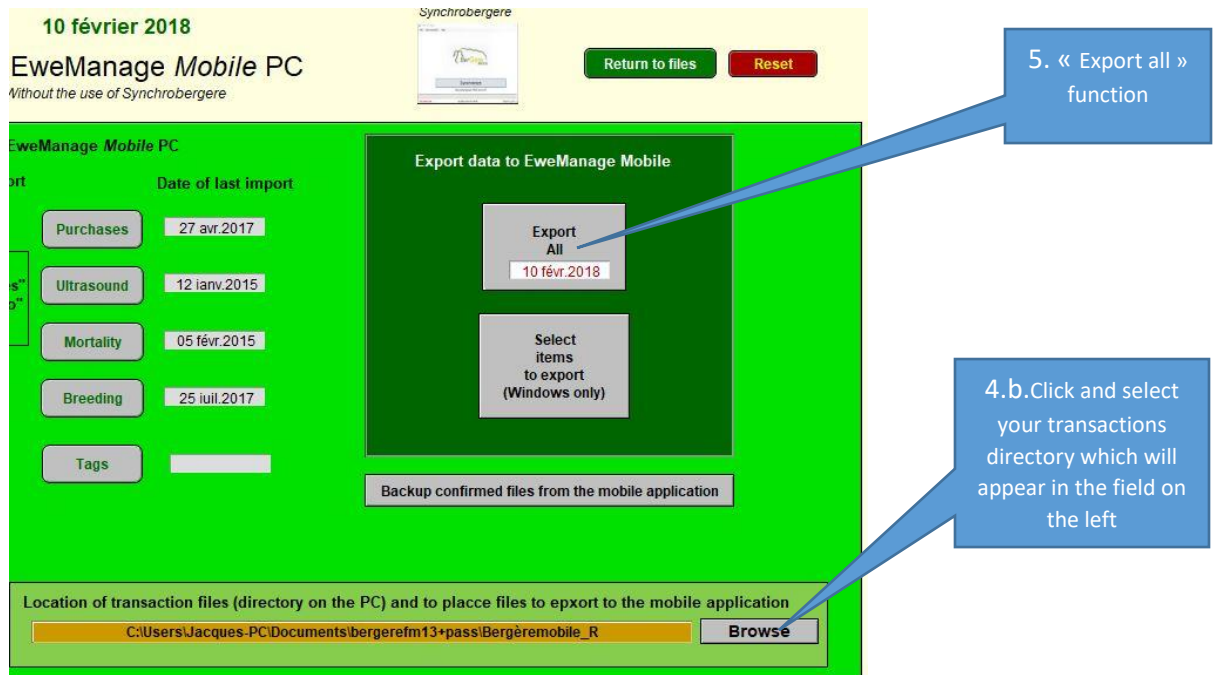


4. Configure EweManage.

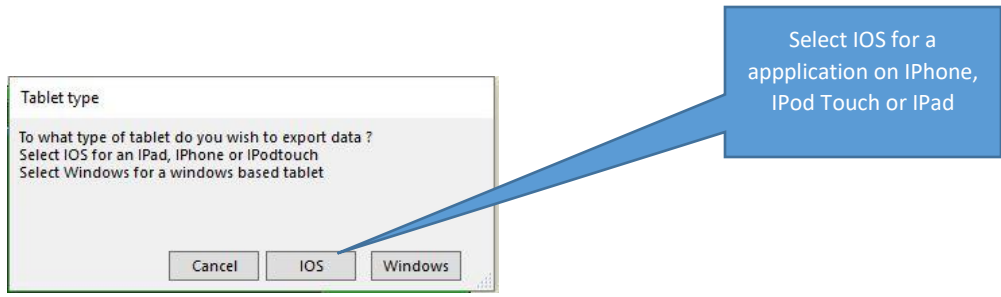
- a. Open EweManage on your computer and access the function "EweManage mobile PC" by the button "Readers /scales" available on any of the flock record:



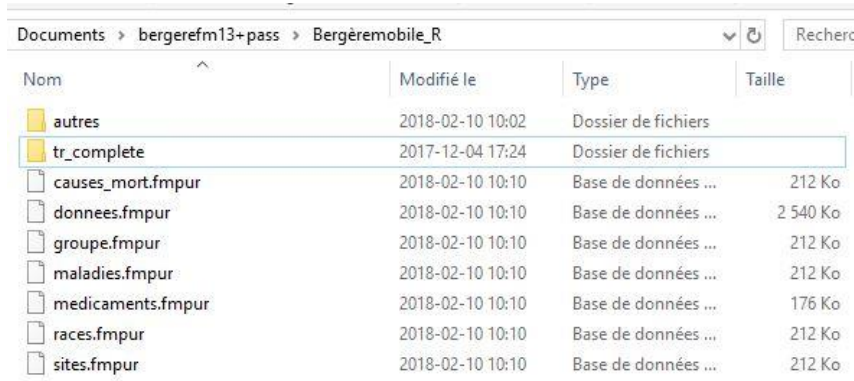
- b. In the import and export screen of EweManage Mobile, you must indicate in which directory you will find the files created by EweManage to export towards the mobile and to deposit the files of the transactions that you will export from the mobile. In this screen, click on the button "To traverse" with the bottom of the screen in order to choose the directory which will be useful for the files D transfer. Here, we chose the Bergèremobile_R directory:



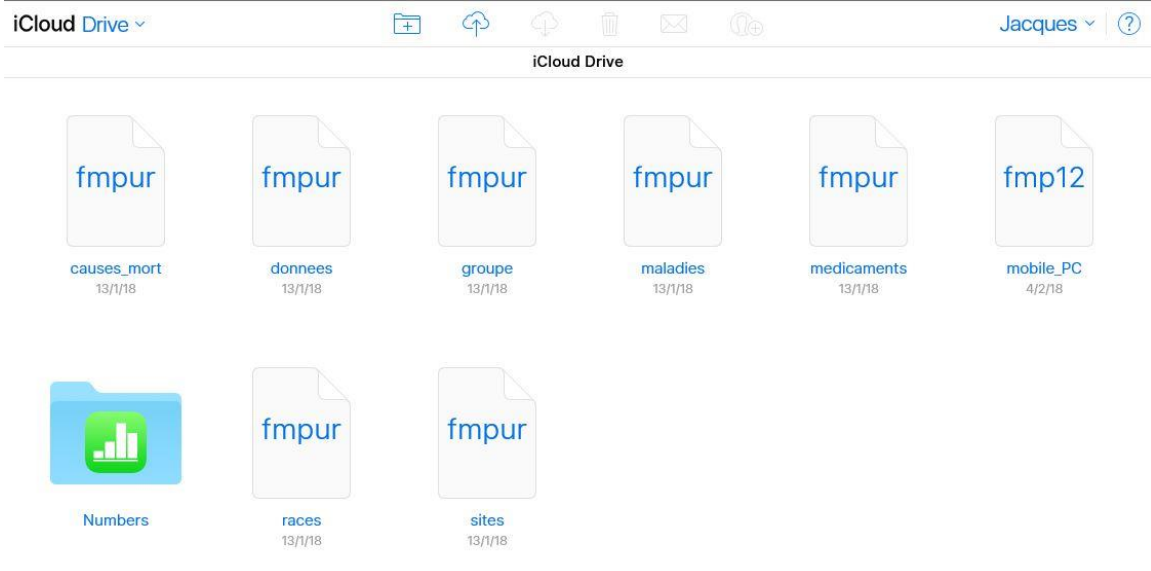
5. **Export EweManage data towards the mobile:** The next step will create the files containing EweManage data that you will export to your mobile and install in the mobile application of your iPhone. Click on the button "Export All" in the dark green section entitled "Export data to... » In the dialog box, select export "IOS" and wait for the 3 messages confirming that the data is exported.



In the directory which you will have chosen at stage 4 B. above, you will now have 7 files of the type .FMPUR which you will copy in your iCloud space for further transfer to your mobile. (eventhough these files have french names, they are easy to recognize)



- Copy the files on iCloud:** reach your iCloud drive by www.icloud.com and copy the 7 files created in the directory chosen in the EweManage configuration along with the file mobile_PC.FMPUR that you have downloaded from logicielbergere.com.



- On your Iphone:** The next step consists in activating the application on iPhone and to import the data already exported from EweManage and contained in the .FMPUR files.

a. Launch the application Filemaker Go. You will have the screen which follows:



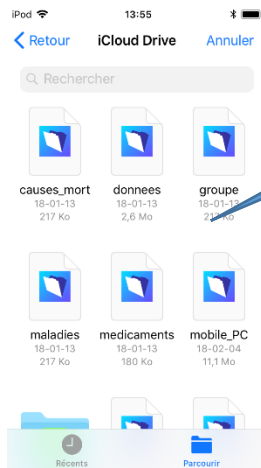
As you do not have files yet, click on the button "Device" to see the files on your device which correspond to the application Filemaker Go

b. You will have access to your iCloud then:



Link towards iCloud, click on this button

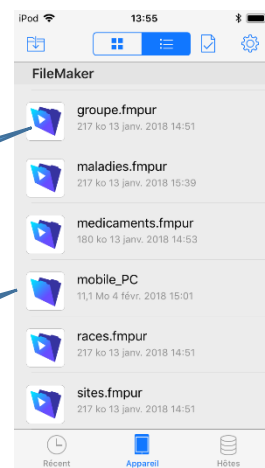
c. Download all the files of iCloud on your device, with one while clicking on each one:



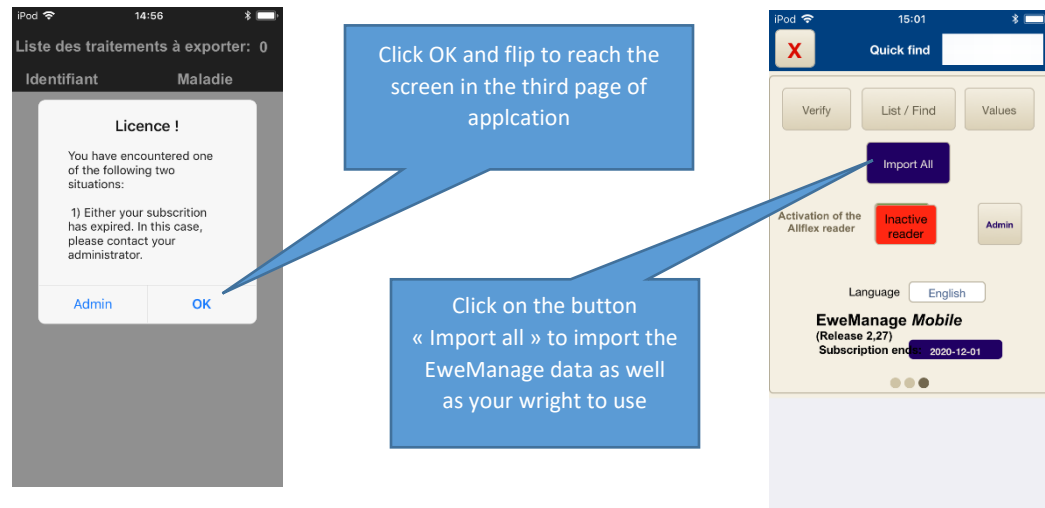
Files on iCloud

Files once downloaded on your iPhone

Stage D. Below: click on the Mobile_PC file to start the application



- d. **Import the data on the iPhone:** When the application starts for the first time, you must mandatorily import the EweManage data (which contains also the end date of your license). You will have the following message:



- e. **Bravo!** You now have to select your language and you are done. For operation, please consult the user guide

Refresh the EweManage data:

Following the use of the mobile application, you will have to transfer the new transactions made on the mobile and confirm them in EweManage using the import menu on your PC. On the other hand, if you wish to keep the data of your mobile up to date, you will have to refresh it regularly by exporting again from the PC application to the mobile.

Follow steps 5 and 6 above and reimport your data on your device (stage 7 above) having taken care to previously delete the old files of the .FMPUR type of your device before importing the new ones. (Except for Mobile_PC.FMPUR unless there is an upgrade to the application). To delete the files (screen on the right of the stage 7.c above), you have only to flip the files towards the left.

Use of a RFID reader on iPhone

Only the readers Allflex LPR and RS420 will connect on the Apple mobile devices. See the of installation guide of these readers for further information.